

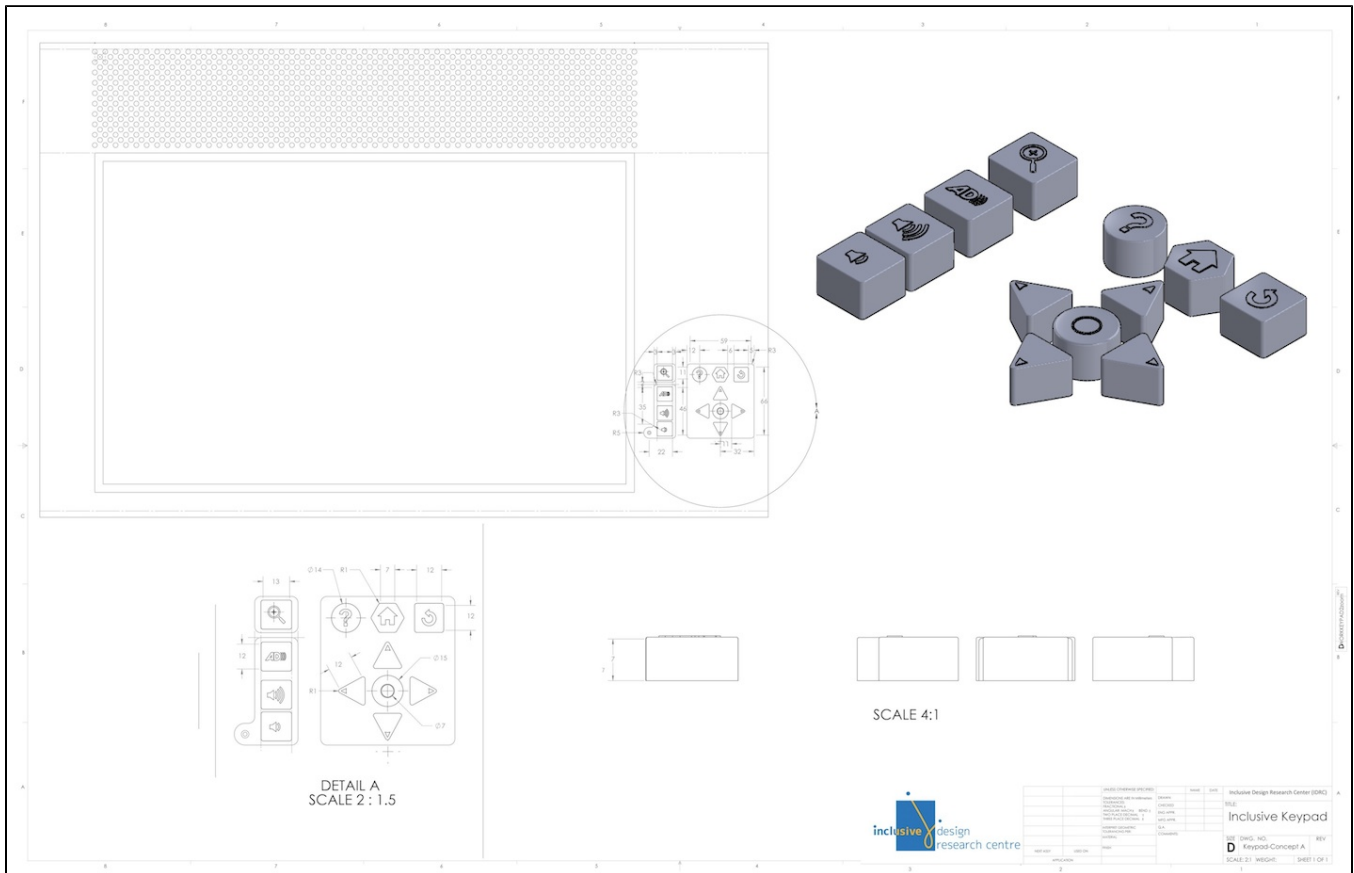
CMHR Keypad Testing Prototype Design

Note

The following design was used in the CMHR keypad user testing, with one exception. The symbol on the screen reader on/off key (shown here with an "AD" symbol) was changed to a rectangular speech bubble containing 3 sequential dots. See images of the test setup at [CMHR Keypad Testing Prototype](#).

See Also

- [CMHR Keypad Testing Prototype](#)
- [User Testing Protocol - CMHR Keypad](#)
- [User Testing Results - CMHR Keypad](#)
- [CMHR Keypad Final Design - No Back Key \(May 30, 2013\)](#)
- [CMHR Keypad Final Design - With Back Key \(May 30, 2013\)](#)
- [Keypad Functionality](#)
- [Final Report to CMHR](#)



SCALE 4:1

DETAIL A
SCALE 2 : 1.5



NO.	DESCRIPTION	DATE	BY
1	ISSUED FOR PRODUCTION		
2	ISSUED FOR PRODUCTION		
3	ISSUED FOR PRODUCTION		
4	ISSUED FOR PRODUCTION		
5	ISSUED FOR PRODUCTION		
6	ISSUED FOR PRODUCTION		
7	ISSUED FOR PRODUCTION		
8	ISSUED FOR PRODUCTION		
9	ISSUED FOR PRODUCTION		
10	ISSUED FOR PRODUCTION		

Inclusive Design Research Center (IDRC)
 Inclusive Keypad
 DWG: INC-Keypad-Concept A
 SCALE: 2:1 WIGHT SHEET 1 OF 1