

User States and Contexts

Work in Progress...

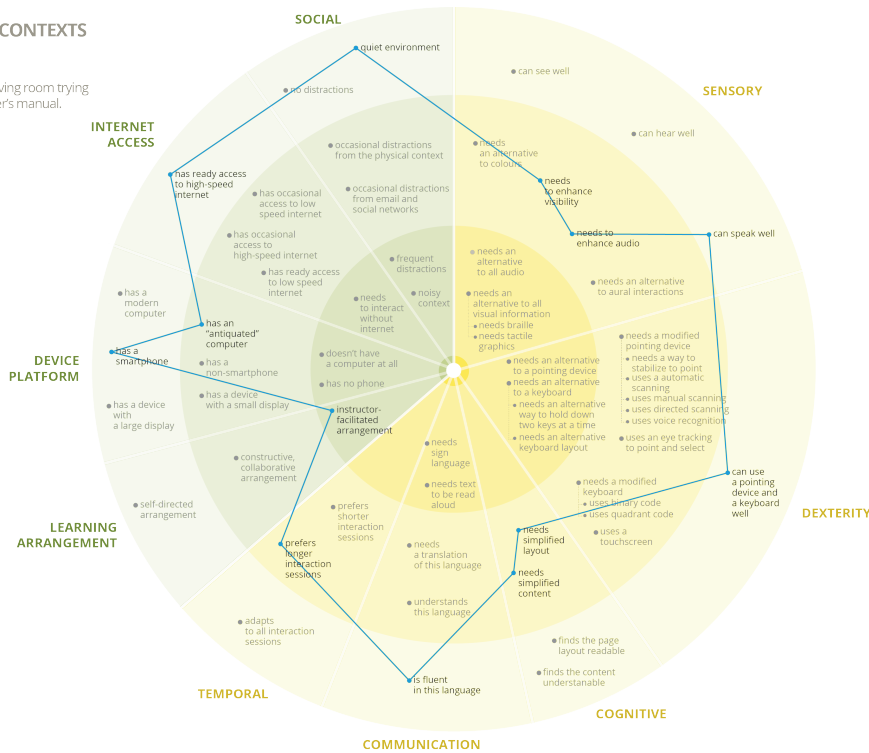
User States and Contexts

"User states & contexts" is a user modelling tool for conceptualizing, designing, and evaluating the ability of a design to be consumed and operated by users in a wide range of states and contexts. This tool is motivated by the need to keep up with the considerations of basic use (consumption and operation) for all the many states and contexts users can be in. (To get more information on the tool please see the [\(Floe\) User states and contexts.](#))

This tool should be used in conjunction with the [usecases](#) that have been developed for P4A. The following diagram represents the Marney usecase as a consumer.

USER STATES & CONTEXTS

MARNEY
During the day in the living room trying to read her new scooter's manual.



[User States & Context-Enlarged.pdf](#)